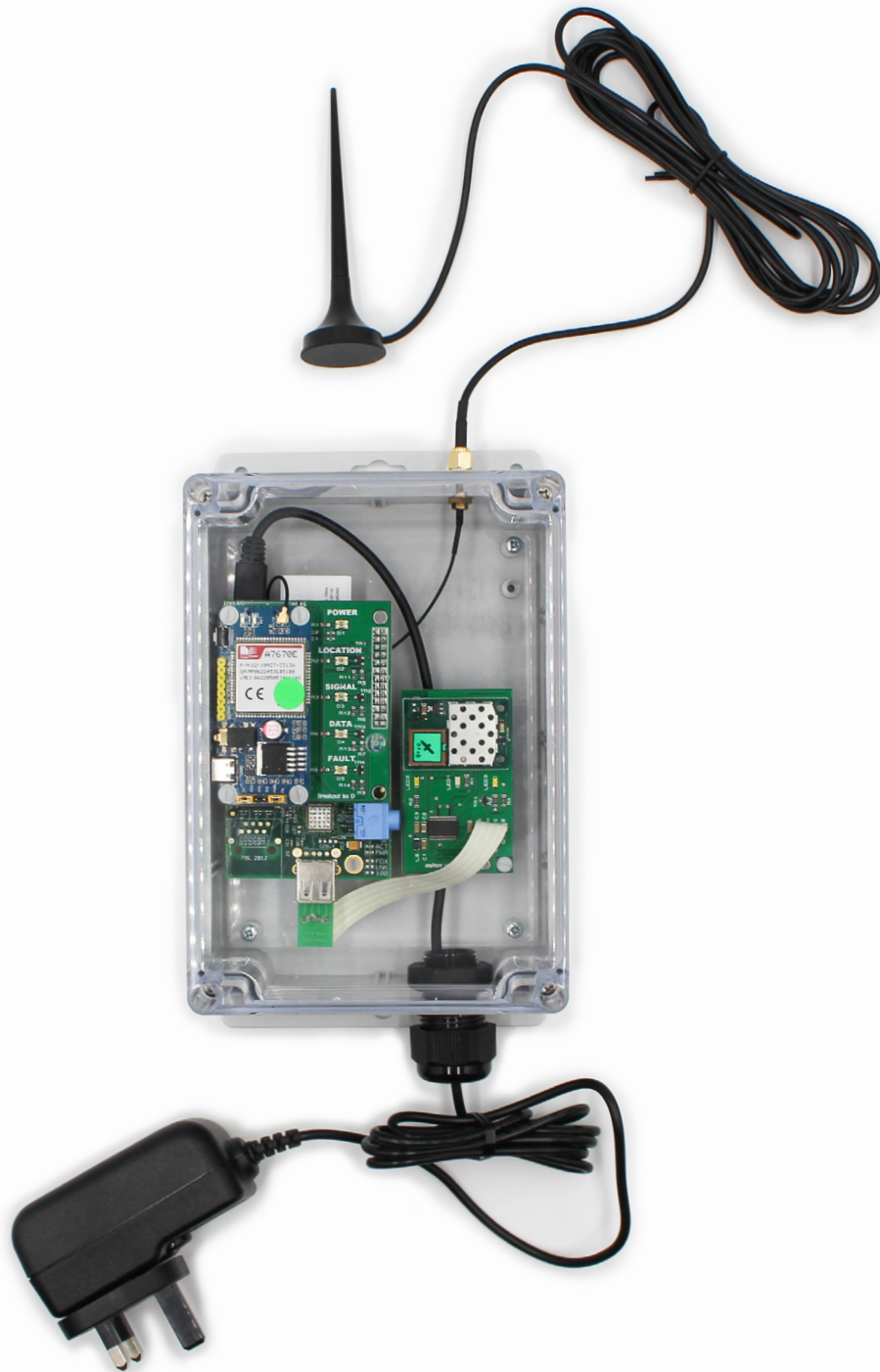
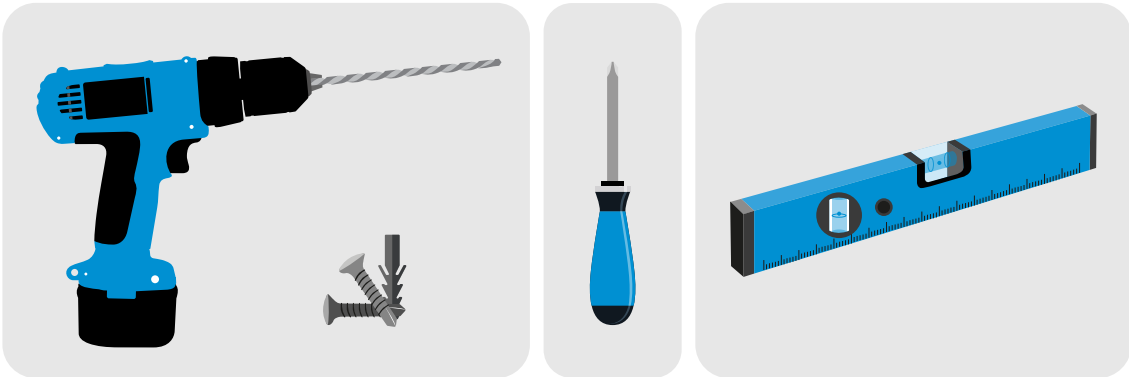


OWNER'S MANUAL

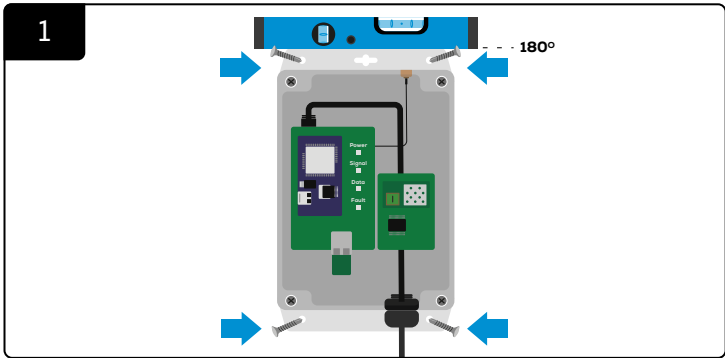
iHUB-CLA-02



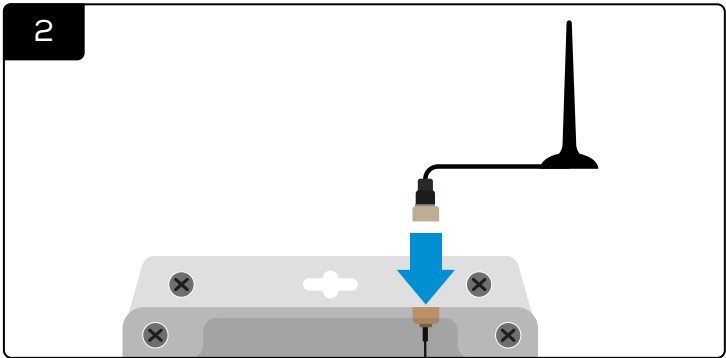
TOOLS REQUIRED



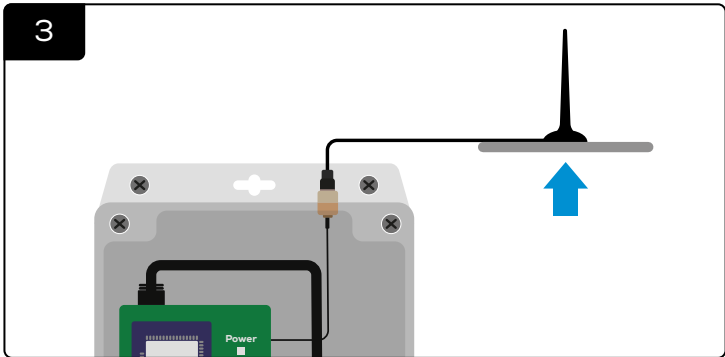
EGO!GATEWAY INSTALLATION



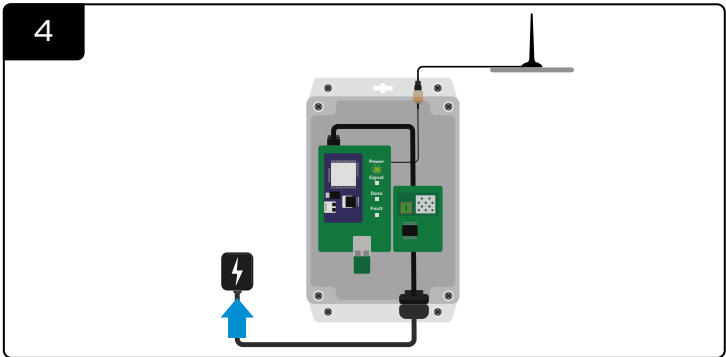
Mount the control box to the wall using four screws/anchors and a level. Make sure it is firmly attached to the wall.



Attach antenna to the eGO!gateway™.



Place the antenna as high as possible to maximise signal.

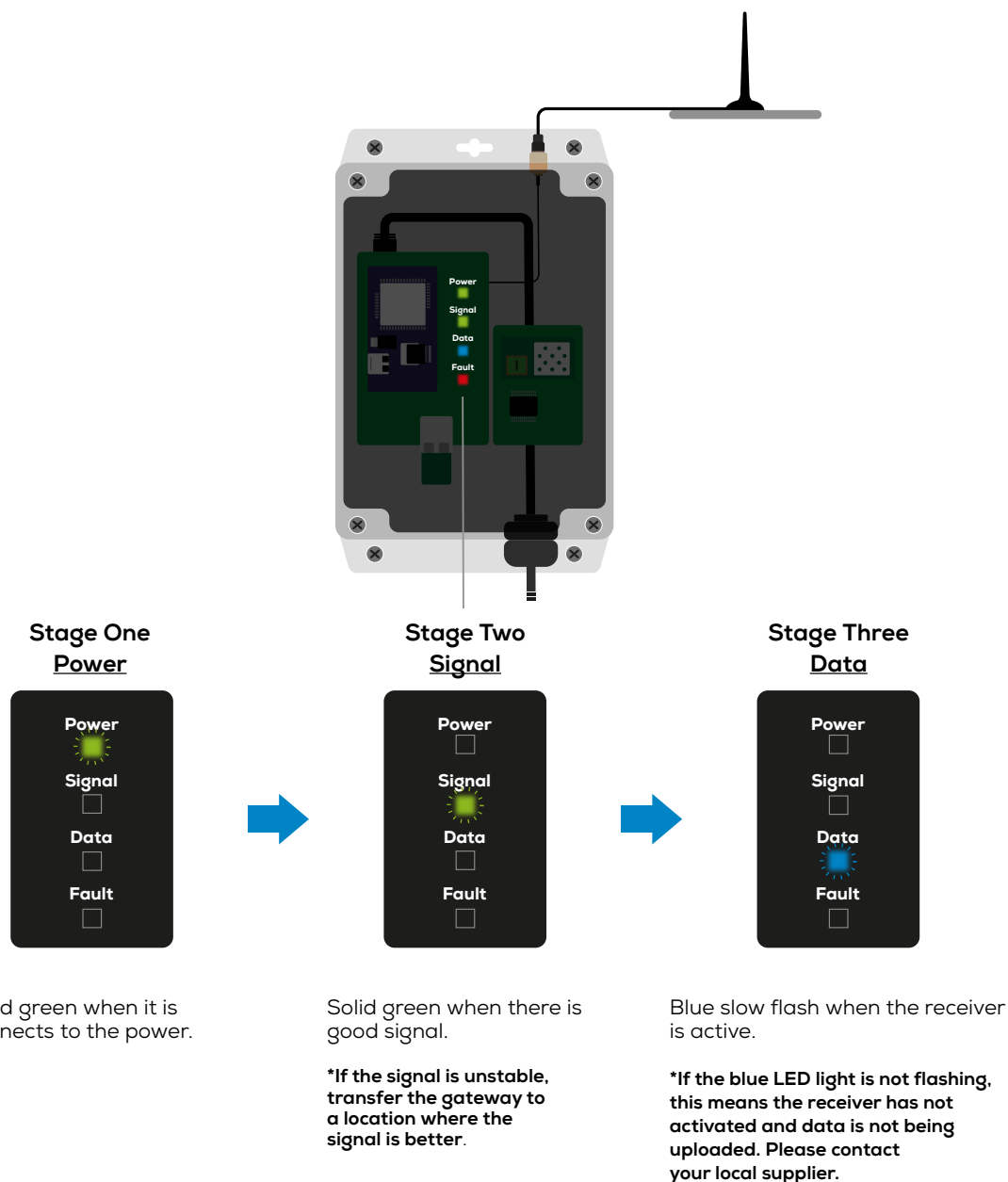


Powering the device.

Table 1: Installation Locations

✓ Recommend Locations	✗ Avoid Locations
Battery Room (*In-range of eGOs)	Exterior Location
Main Charging Area (*In-range of eGOs)	Humid Areas (e.g. Boiler Room)
	Enclosed Spaces
	Metal Clad Areas

START-UP LED SEQUENCE



***If the Red LED illuminates, please contact your local supplier.**



**FOR PRODUCT SPECIFICATIONS, USER GUIDES
AND FURTHER INFORMATION PLEASE VISIT:**

<https://www.phlsci.com/product-lines/battery-performance-monitors>

DOC0651© 2025 Philadelphia Scientific UK Ltd. All Rights Reserved. Philadelphia Scientific and the PS logo are registered trademarks of Philadelphia Scientific LLC. eGO! and eGO!gateway are trademarks of Philadelphia Scientific UK Limited. E&O.E. R1-170625



WWW.PHLSCI.COM

Philadelphia Scientific LLC
P: +1 (215) 616 0390
E: info@phlsci.com

Philadelphia Scientific EMEA
P: +44 (0) 1204 467777
E: info@phlsci.co.uk

Philadelphia Scientific ASIA PACIFIC
P: +61 (2) 8004 2447
E: info@phlsci.com.au

