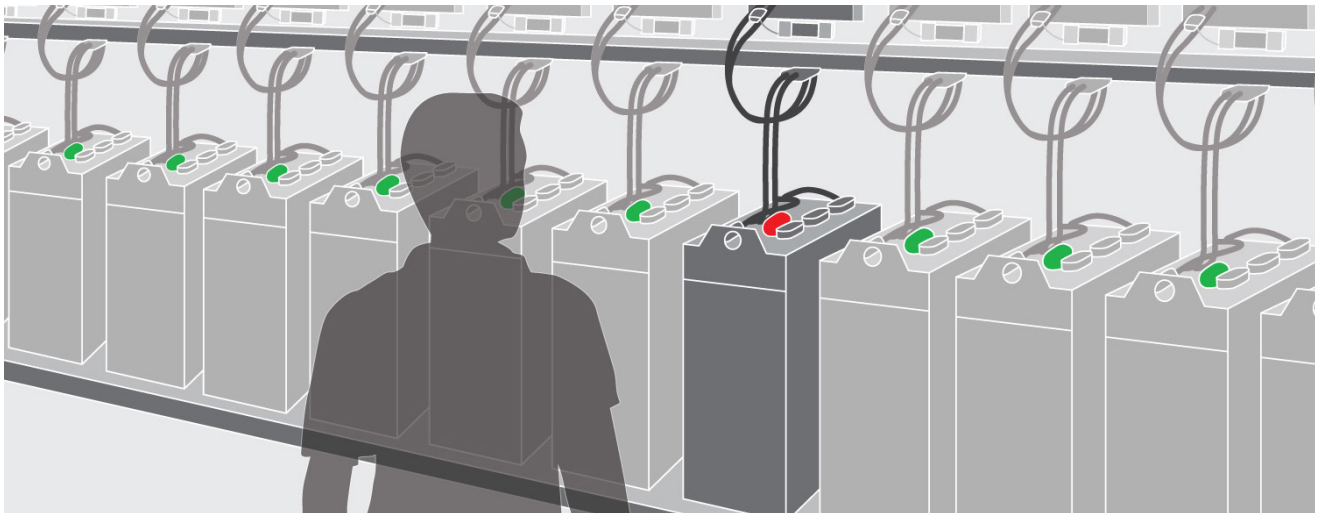


SmartBlinky™

The smartest, and most versatile, battery water level monitor now with simpler installation and market leading super bright indicator.



Let your batteries tell you when they need water.

Save time and avoid costly permanent damage to your batteries with the SmartBlinky.

SmartBlinky, with its patented 'Smart Delay' technology, was a major innovation in the battery industry, providing confidence to users that their batteries are being watered at the optimum time. SmartBlinky is also versatile and the indicators can be positioned in the best place for an application; on the battery top, on the tray, between the DC cables or on the vehicle itself. A modern makeover for the 3rd generation SmartBlinky includes a number of upgrades to ensure it continues to be the 'smartest' battery water level monitor on the market.

Warehouse personnel often waste time inspecting and watering batteries that do not require filling, while batteries left under-watered can suffer expensive permanent damage. 'Magic eyes', the level indicators on floats, are misleading and show the battery needs watering prematurely due to the minimal drop in electrolyte level that indicates water is required. The Blinky™ range features patented UL Classified® technology that improves battery maintenance by intelligently alerting personnel when a battery needs water.

With introduction of the SmartBlinky Pro, with an audible alarm, SmartBlinky is now the mid-range battery water level monitor in our range and offers comprehensive functionality for great value.

New Features

- ✓ SmartBlinky is 8 times brighter than the previous model with a calmer 'OK' signal and a more aggressive 'Fill Now' signal so users know when to top up.
- ✓ Now suits 6V and 12V batteries.
- ✓ A lower profile than previous models to reduce potential for damage.
- ✓ Installation error forgiveness with reverse polarity.

“With an installed cost of just £50/\$100/€65 SmartBlinky provides a ROI in just 18 weeks through increased battery life and reduced maintenance cost.”

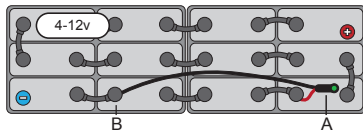
SmartDELAY

The electrolyte level in a battery can rise and fall several times a day; with SmartDELAY the SmartBlinky's LED only turns red when the electrolyte level has been low for 24 hours; reducing the risk of incorrect topping and topping frequency.

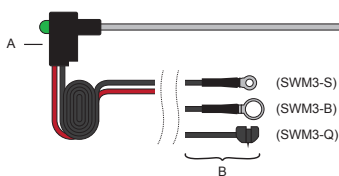
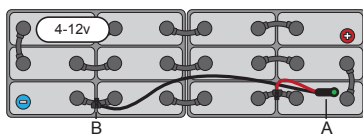
A five-day delay version of the SmartBlinky is available to maximise the time between watering.



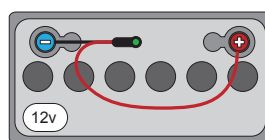
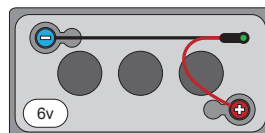
SWM3-S/B



SWM3-Q



Monobloc



Specifications

Operating Voltage	4.0v to 12.0v.
Forgiveness Zone	14v to 16.0v
Nominal Current	2.67mA
Indications	Green flash – OK
	Red flash – Fill Now
Reverse Polarity Protection	Yes
Connections	B) M10 steel ring S) M4 steel ring and screw Q) FlexiTap piercing
Flame Retardant	UL V-0
Certification	UL, C-Tick, CE Mark
Fuses	S and B - Two Q - Three
Warranty	1 year

Features and benefits summary

Brightest LED: SmartBlinky's LED is the brightest available and eight times brighter than the previous model.

Patented design: SmartBlinky is an electronic probe that senses the electrolyte in a cell. The simple low cost circuit provides clear indication when a battery needs water.

Rugged design: SmartBlinky has a lower profile than its predecessor and is made of corrosion resistant materials.

Wide operating range: Connect between 4 to 12 volts, therefore suitable for both 6v and 12v mono-blocks.

Forgiveness zone: Connection between 14 to 16 volts causes SmartBlinky to hibernate.

Reverse polarity protection: Connecting SmartBlinky 'the wrong way round' will not damage it.

Three connection types: Available with B = M10 steel ring for bolt intercell connectors, Q = FlexiTap self-piercing option; S = M4 selftapping screw and steel ring.

Fits all cells: The probe length is cut to the correct size by the installer.

Reduce watering intervals: Improve productivity by only watering batteries when necessary.

Immediate ROI: A low cost solution that delivers fast ROI through reduced labour costs and by preventing battery damage.

Battery friendly probe: The conductive probe of SmartBlinky is made of lead alloy for compatibility with lead-acid batteries.

Self-powered: SmartBlinky is powered by the battery on which it is installed and uses a tiny amount of energy which won't reduce battery life.

Warranty: SmartBlinky comes with a one-year conditional warranty and has an anticipated design life greater than five years.

Improved operator safety: The indicator means maintenance staff no longer need to peer into vent wells to check water levels.



www.phlsci.com

Philadelphia Scientific Americas

207 Progress Drive, Montgomeryville, PA, 18936 USA
P: +1 (0) 215 616 0390 F: +1 (0) 215 616 0500

Philadelphia Scientific EMEA

188 Oxford Grove, Bolton, BL1 3BH, UK
P: +44 (0) 1204 467777 F: +44 (0) 1204 493300

Philadelphia Scientific Asia Pacific

2/17 Norman Street, Peakhurst, NSW, 2210, Australia
P: +61 (0) 2 8004 2447 F: +61 (0) 2 9012 0383