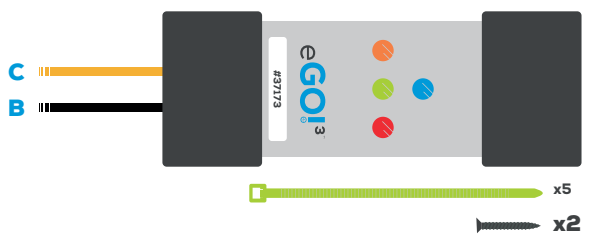
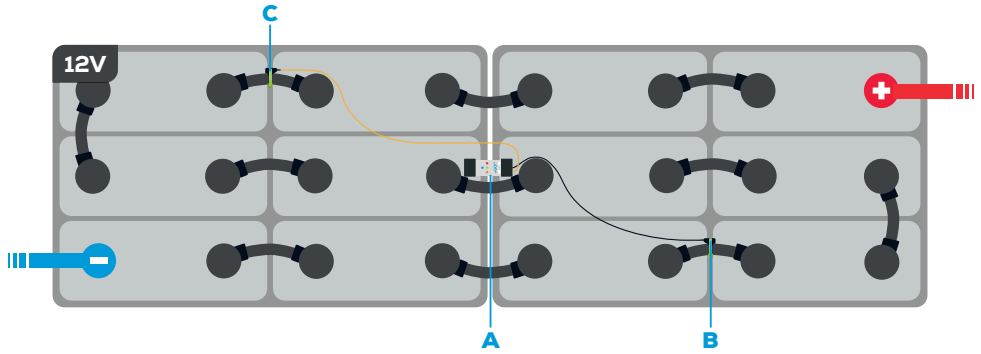


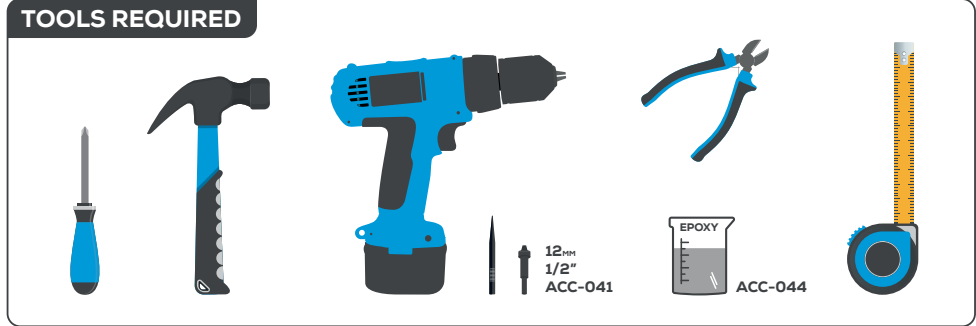
INSTRUCTIONS

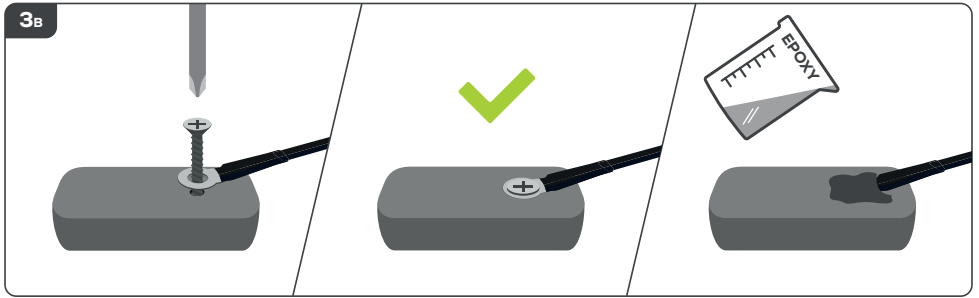
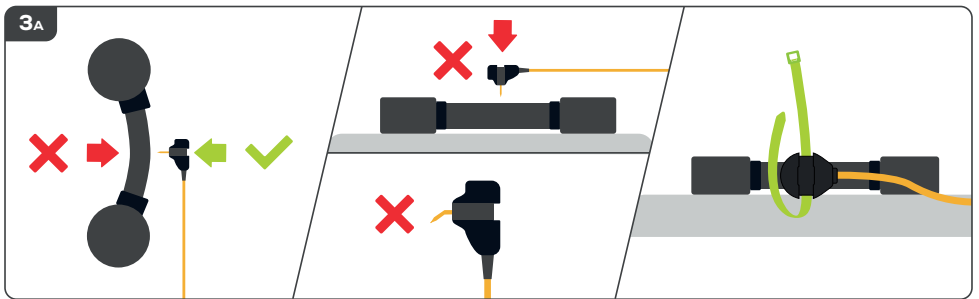
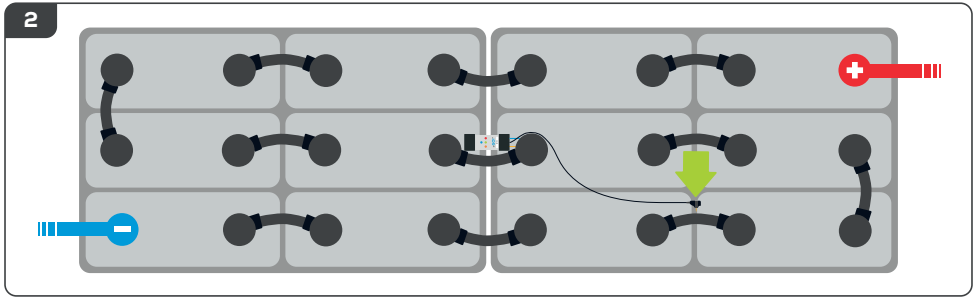
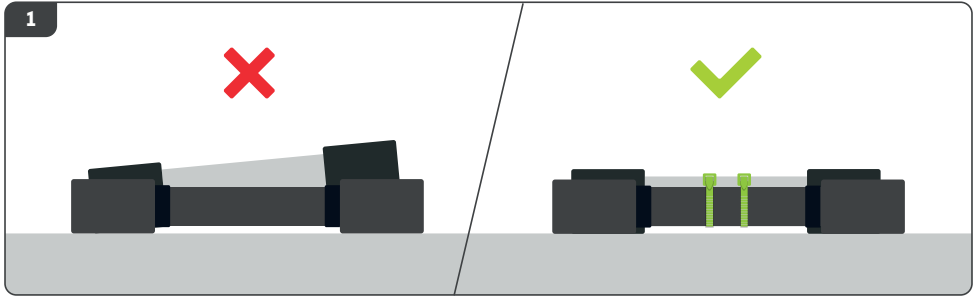


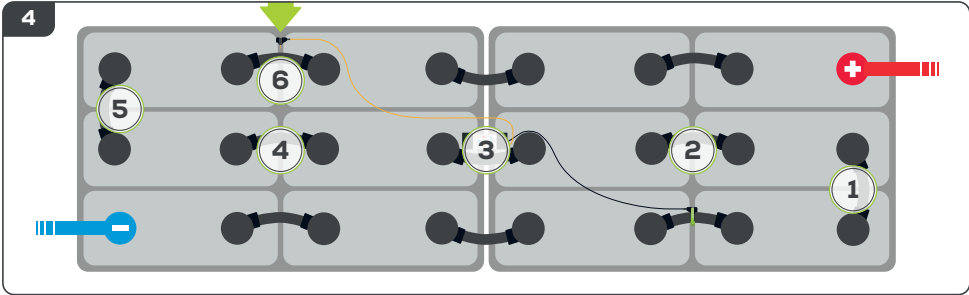
EGO3-12QG/SG



TOOLS REQUIRED







INITIAL START UP



ONCE THE POWER CONNECTIONS HAVE BEEN MADE AND THE ELECTROLYTE LEVEL INDICATOR HAS BEEN CORRECTLY INSTALLED, THE EGO!3 IS READY TO START MONITORING. YOU SHOULD EXPECT TO SEE THE FOLLOWING LIGHT SEQUENCE ON THE EGO!3:



LIGHTS IN SEQUENCE.



RED (PLUS WHITE PULSE IF ACCESSORY FITTED)

- 1 PULSE FOR SOLENOID OPTION.
- 2 PULSES FOR PUMP OPTION.
- 3 PULSES FOR DASH INDICATOR.



5 SECONDS
WIRELESS COMMUNICATIONS INITIALIZING.



WARNING: CHECK INSTALLATION. THIS LIGHT INDICATION MEANS THAT THE EGO!3 DETECTS A VOLTAGE OUTSIDE OPERATING VOLTAGE. CHECK THE INSTALLATION IS ACROSS 12V (6 CELLS) AND THAT THE BATTERY IS NOT ON CHARGE.



BLUE SHOULD BE FLASHING WITH AN ALTERNATE GREEN AND RED FLASH. THIS INDICATES THAT THE EGO!3 IS LISTENING FOR ANY UPLOAD INFORMATION. THIS LASTS FOR 2 MINTUES AFTER WHICH NORMAL LIGHT INDICATION WILL RESUME.

FOR AN INSTALLATION VIDEO SHOWING A STEP BY STEP GUIDE TO CORRECTLY INSTALL YOUR eGO!3 BATTERY LIFE MONITOR PLEASE VISIT:



[BIT.LY/EGO3GINSTALL](https://bit.ly/ego3ginstall)

LED INDICATIONS



FOR ADVANCED FEATURES, USER GUIDES AND FURTHER INFORMATION PLEASE VISIT:



[BIT.LY/EGO3BLM](https://bit.ly/EGO3BLM)

DOC0157 © 2018 Philadelphia Scientific UK Ltd. All Rights Reserved. Philadelphia Scientific and the PS logo are registered trademarks of Philadelphia Scientific. eGO3 is a trademark of Philadelphia Scientific LLC. ESO.E.



WWW.PHLSCI.COM

Philadelphia Scientific LLC
P: +1 (215) 616 0390
E: info@phlsci.com

Philadelphia Scientific EMEA
P: +44 (0) 1204 467777
E: info@ps-europe.net



Philadelphia Scientific ASIA PACIFIC
P: +61 (2) 8004 2447
E: info@phlsci.com.au