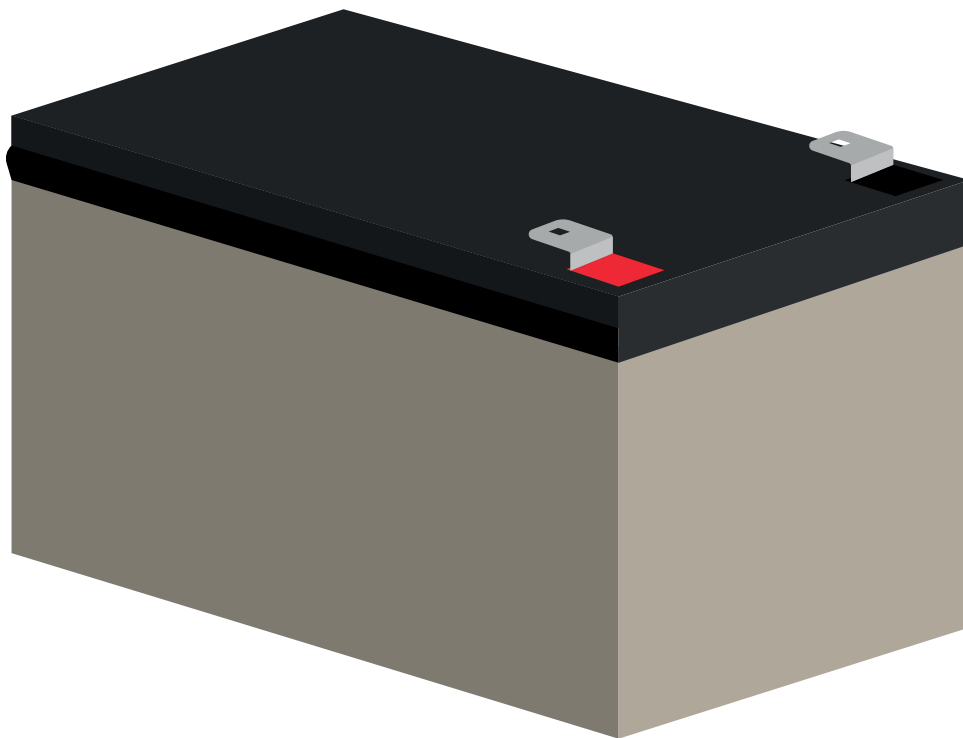


# REPLACEMENT BATTERY

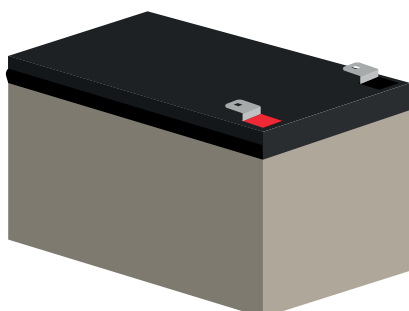
CRT-095 *(\*FOR USE IN CRT-2A & CRT-3)*

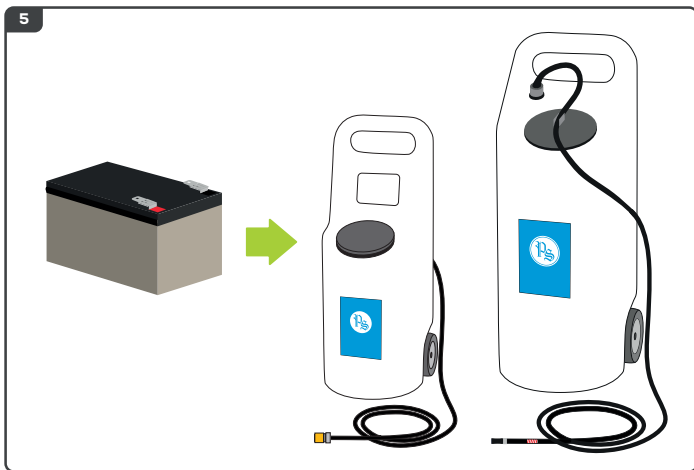
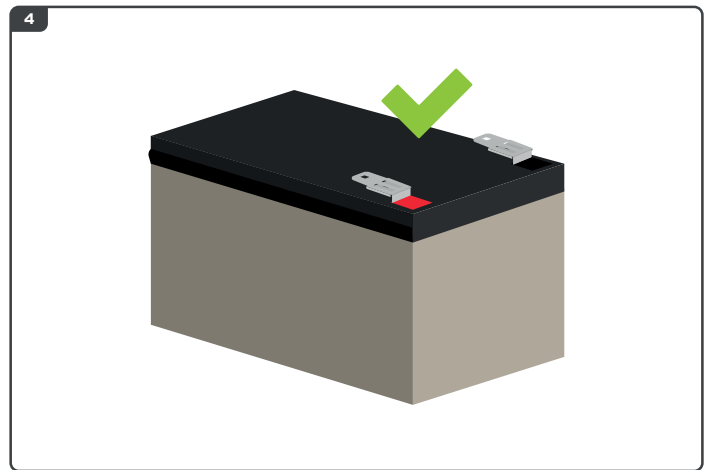
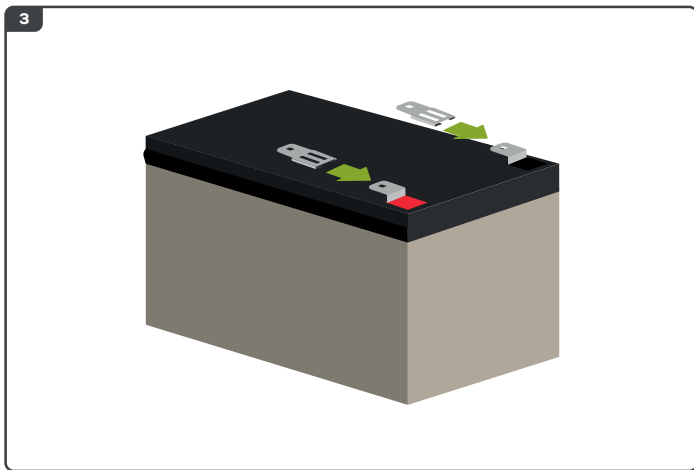
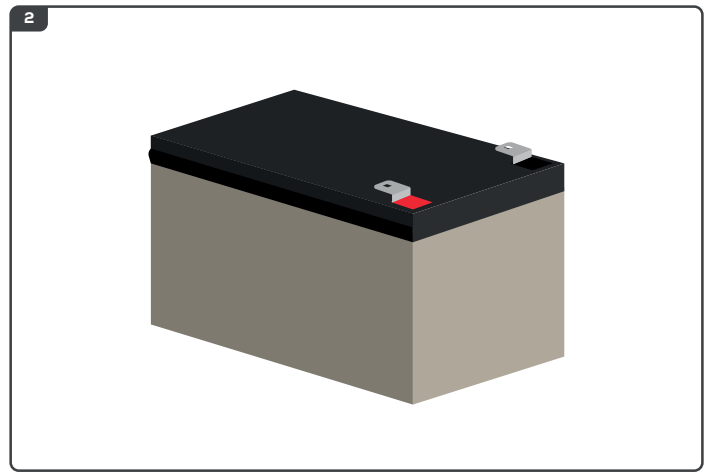
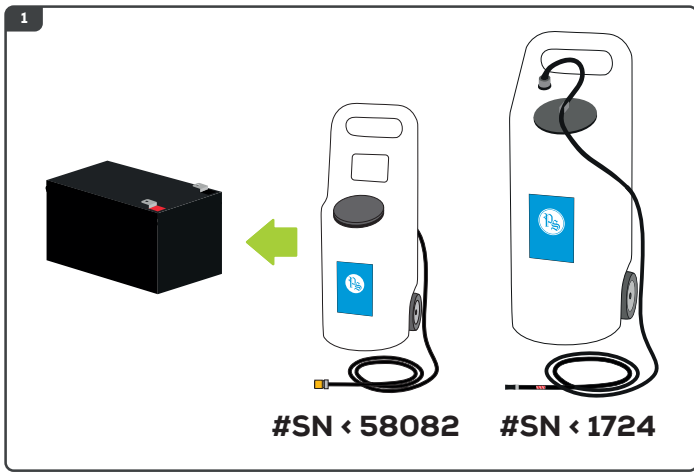


## FITTING INSTRUCTIONS



### KIT CONTENTS





DOC0494 © 2021 Philadelphia Scientific LLC. All Rights Reserved. Philadelphia Scientific, the PS logo and HydroFill are registered trademarks of Philadelphia Scientific. HydroFill Pro is a registered trademark of Philadelphia Scientific (U.K) Limited. E&O.E



[WWW.PHLSCI.COM](http://WWW.PHLSCI.COM)

Philadelphia Scientific LLC  
P: +1 (215) 616 0390  
E: info@phlsci.com

Philadelphia Scientific EMEA  
P: +44 (0) 1204 467777  
E: info@ps-europe.net

Philadelphia Scientific ASIA PACIFIC  
P: +61 (2) 8004 2447  
E: info@phlsci.com.au

