

HYDROFILL™ PRO

BATTERY OPERATED MOBILE WATERING CART



INSTRUCTIONS

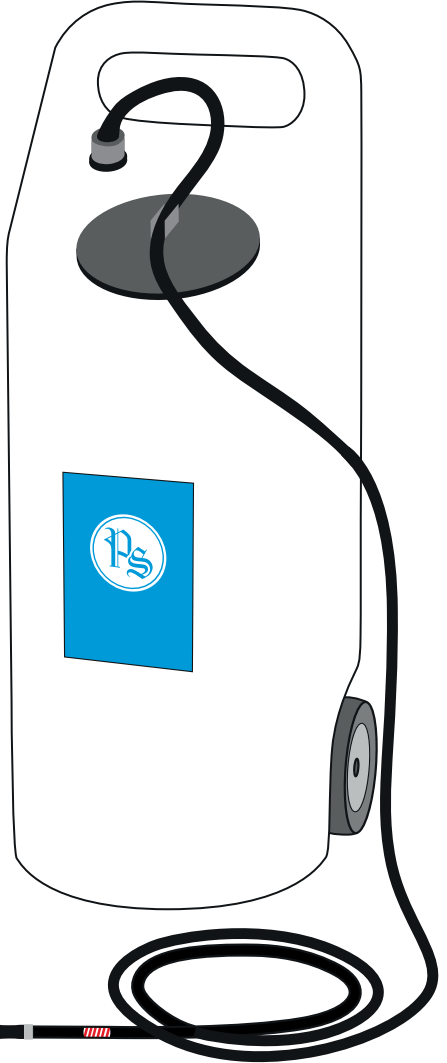
Part No.
CRT-E208



Part No.
CRT-E209



Part No.
CRT-3



Part No.
PS-600

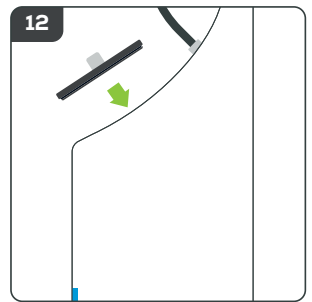
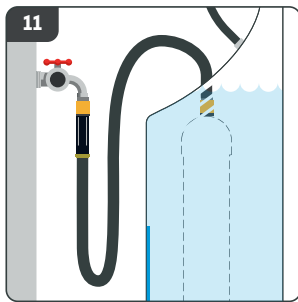
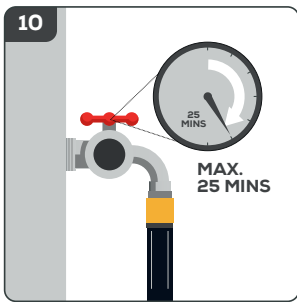
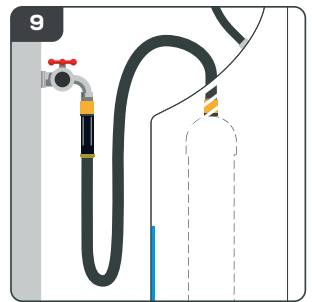
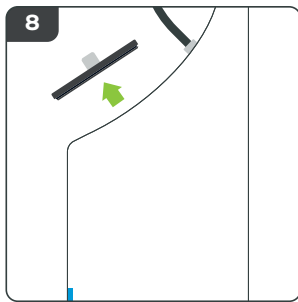
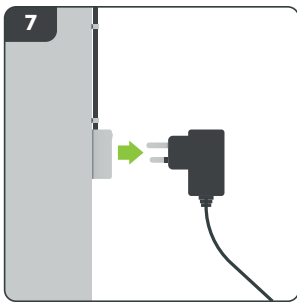
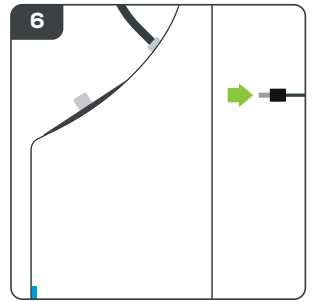
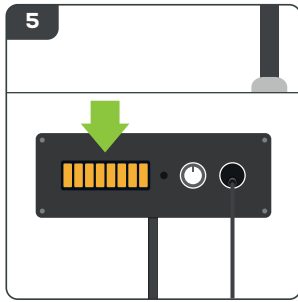
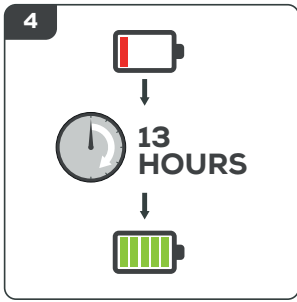
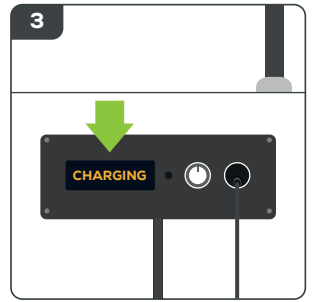
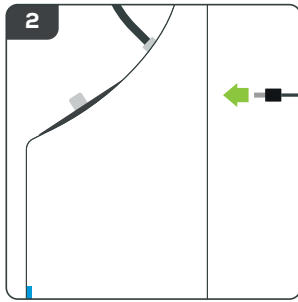
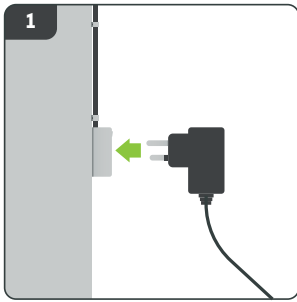


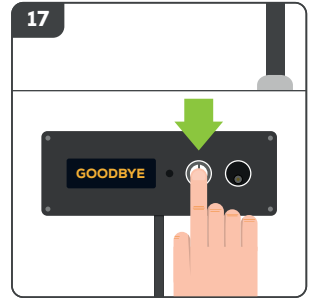
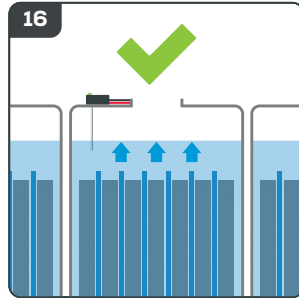
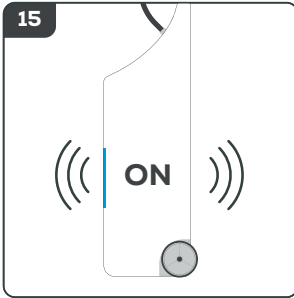
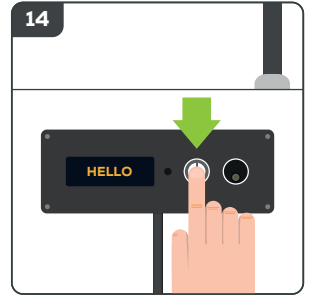
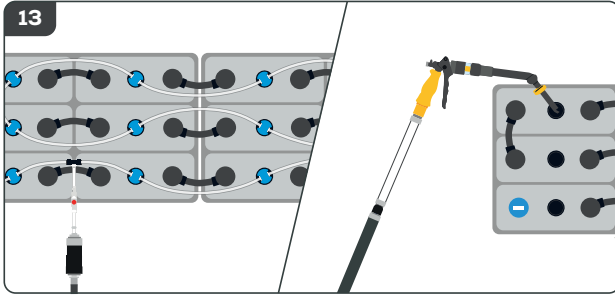
Part No.
CRT-E201



Part No.
CRT-E210







FOR ADVANCED FEATURES, USER GUIDES AND FURTHER INFORMATION PLEASE VISIT:



BIT.LY/HYDROFILLPRO

DOC0216 © 2018 Philadelphia Scientific UK Ltd. All Rights Reserved. Philadelphia Scientific and the PS logo are registered trademarks of Philadelphia Scientific. HydroFill and HydroPure are trademarks of Philadelphia Scientific LLC. ESO.E.



WWW.PHLSCI.COM

Philadelphia Scientific LLC
P: +1 (215) 616 0390
E: info@phlsci.com

Philadelphia Scientific EMEA
P: +44 (0) 1204 467777
E: info@ps-europe.net

Philadelphia Scientific ASIA PACIFIC
P: +61 (2) 8004 2447
E: info@phlsci.com.au

